

- LEGEND:**
- (E) EXISTING
 - (T/E) DENOTE TRASH ENCLOSURE
 - (T) DENOTE RECYCLE AREA
 - (P) DENOTE TRANSFORMER PAD
 - (P.P.) POWER POLE
 - (F.H.) FIRE HYDRANT
 - (F.R.) FIRE PUMP ROOM

NOTE: SEE SHEET A-1.1 FOR DIMENSIONED SITE PLAN

- KEY NOTES:**
- CONCRETE TILT-UP WALL
 - DECORATIVE CONCRETE PANELS, SEE ELEVATIONS
 - DECORATIVE GLASS CURTAIN SPANDREL WALL, SEE ELEVATIONS
 - PATH OF TRAVEL, 48" WIDE (MIN.)
 - BUILDING ENTRANCE, PROVIDE A 4" SQ. DISABLED ACCESSIBILITY SIGN
 - CONCRETE LANDING 5' SQ. (MIN.) W/ 2 ANY DIRECTION, EXTEND LEVEL LANDING 24" (MIN.) BEYOND THE STRIKE SIDE OF THE DOOR) TYPICAL
 - TRASH ENCLOSURE / RECYCLING AREA (PER CITY OF COMMERCE STANDARDS) TYPICAL, SEE
 - 6" THICK CONCRETE PAVING IN PARKING AREA ON 6" OF CLASS "B" CRUSHED AGGREGATE BASE ON 24" DEEP OF 90% MODIFIED PROCTOR COMPACTED BASE SUB-GRADE (65' DOCK APRON AREA) SEE STRUCTURAL DWGS. FOR REINFORCEMENT, SEE CIVIL DWGS.
 - STEEL COLUMN (TYP.)
 - 9' X10' TRUCK DOOR (DOCK HIGH) TYPICAL
 - 12' X14' TRUCK DOOR (DOCK HIGH)
 - NEW DRIVEWAY
 - LANDSCAPING
 - DRIVE AROUND FIRE LANE MINIMUM 28' WIDE
 - (1) BICYCLE RACK (PARKS 4 BICYCLE) MODEL BR14-G BY BELSON
 - (1) BICYCLE RACK (PARKS 9 BICYCLE) MODEL BR16-G BY BELSON
 - 4'-0" MEANDERING SIDEWALK
 - 8'-0" HIGH CONCRETE TILT UP SCREEN WALL PAINTED TO MATCH THE BUILDING, SEE STRUCTURAL
 - CONCRETE CURB, SEE
 - PREFABRICATED GUARD SHACK "BY OTHERS"
 - 8'-0" WROUGHT IRON GATES AT BOTH SIDES OF GUARD SHACK
 - 12' X 50' TRUCK PARKING STALL, TYPICAL
 - 8'-0" HIGH CHAIN LINK FENCE
 - CONCRETE STAIRS, TYPICAL, SEE SHEET AD-1.1
 - 6" THICK CONCRETE PAVING IN PARKING AREA ON 6" OF CLASS "B" CRUSHED AGGREGATE BASE ON 24" DEEP OF 90% MODIFIED PROCTOR COMPACTED BASE SUB-GRADE - SEE CIVIL DWGS
 - PARKING STALL STRIPPING (PER CITY OF COMMERCE STDS.) TYP.
 - FORKLIFT RAMP
 - ENHANCED PAVING - SEE LANDSCAPING DRAWINGS
 - STORM WATER RETENTION PER CIVIL DRAWINGS
 - CONCRETE BUMPER, TYPICAL
 - PARKING LOT TREE PLANTER, TYPICAL SEE LANDSCAPING DWGS.
 - 3HR FR CONCRETE TILT UP WALL, FACING 40' YARD
 - LOADING SPACE STRIPED WITH A 3" WIDE STRIPE AND LETTERING PER THE CITY OF COMMERCE STANDARD, TYPICAL
 - CARPOOL / VAN POOL RESERVED PARKING STALL
 - 8'-0" HIGH DECORATIVE FENCING: CHAIN LINK FENCE WITH VINE POCKETS @ 20'-0" O.C.
 - (N) PRIVATE FIRE HYDRANT, SEE
 - (E) 6" X 4" X 2 1/2" OFF SITE FIRE HYDRANT
 - PROVIDE FIRE DEPARTMENT KNOX BOX
 - CLEAN AIR VEHICLE PARKING TYPICAL

PROJECT DATA

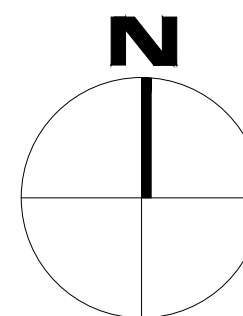
DESCRIPTION	AREAS
ZONING	M 2 (HEAVY MANUF.)
LEGAL DESCRIPTION	PARCEL NO. 1 OF PARCEL MAP NO. 11041, IN THE CITY OF COMMERCE, COUNTY OF LOS ANGELES AS PER MAP RECORDED IN BOOK 131 PAGES 44 AND 45 OF MAPS, IN THE OFFICE OF THE COUNTY RECORDER OF SAID COUNTY.
ASSESSOR'S PARCEL NO.	4354-019-006 6334-019-007
BUILDING CODE	ABC 2010
BLDG. OCCUPANCY	S-1, F-1
BUILDING TYPE	III-B, FULLY SPRINKLERED
LAND AREA : PARCEL AREA	1,199.915 S.F. (27.55 AC)
COVERAGE :	52.50%
ALLOWABLE AREA	60%
BUILDING	
TOTAL AREA	630,300 S.F.
FIRST FLOOR	WAREHOUSE OFFICE TOTAL FOOTPRINT
	590,000 S.F. 20,000 S.F. 610,000 S.F.
MEZZANINE FUTURE CONSTRUCTION	20,000 S.F.
TRASH ENCL. AREA PROVIDED	3,250 S.F.
PARKING REQUIRED :	
WAREHOUSE PARKING	590,000/2000 = 295 CARS
OFFICE PARKING	40,000/ 300 = 134 CARS
TOTAL	429 CARS
TRUCK LOADING TRUCK PARKING	1 PER DOOR 1 PER DOOR
PARKING PROVIDED:	
ACCESSIBLE (VAN)	14' X 19' 6 - STALLS
STANDARD STALLS	17' X 19' 6 - STALLS
COMPACT STALLS	9' X 18' 375 - STALLS
MAX 10% (OF REQ.)	7'-6" X 15' 43 - STALLS
TOTAL BICYCLE RACK 5% OF CAR PARKING	430 - STALLS
TRUCK LOADING	12' X 45' 109 STALLS
TRUCK PARKING	12' X 50' 111 STALLS
LANDSCAPED AREA	73,701 S.F.
MIN. REQUIRED: (7.5% OF PARKING AREA = 11,103 S.F.)	
AREA JUSTIFICATION	
UNLIMITED AREA PER SECTIONS 507.2 BUILDING SURROUNDED BY PUBLIC WAYS OR YARDS WITH A MINIMUM WIDTH OF 60' REDUCED TO NOT LESS THAN 40' PER SECTION 507.5	
MAXIMUM ALLOWABLE HEIGHT 55' PER TABLE 503	

FIRE DEPARTMENT NOTES

- PROVIDE A MINIMUM UNOBSTRUCTED WIDTH OF 28 FEET CLEAR TO SKY. VEHICULAR ACCESS TO WITHIN 150 FEET OF ALL PORTIONS OF THE EXTERIOR BUILDING WALLS. CFC CHAPTER 5, SECTION 503.2.1
- THE REQUIRED FIRE FLOW FOR FIRE HYDRANTS AT THIS LOCATION IS 4,000 GPM, AT 20 PSI RESIDUAL PRESSURE, FOR A DURATION OF 4 HOURS, OVER AND ABOVE MAXIMUM DAILY DOMESTIC DEMAND. FIRE CODE 507.3, COUNTY OF LOS ANGELES FIRE DEPARTMENT REGULATION 8.
- THE REQUIRED FIRE FLOW IS BASED ON THE FOLLOWING CALCULATION:
BASIC FIRE FLOW: 8,000 GPM
REDUCTION FOR FIRE SPRINKLERS AND/OR CONSTRUCTION TYPE: 1B-B = 50% = 4,000 GPM
ALL FIRE HYDRANTS SHALL MEASURE 6" x 4" x 2 1/2" BRASS OR BRONZE, CONFORMING TO AMERICAN WATER WORKS ASSOCIATION STANDARD C503, OR APPROVED EQUAL, AND SHALL BE INSTALLED IN COMPLIANCE WITH FIRE DEPARTMENT REGULATION 8, FIRE CODE 507.5
- ALL REQUIRED PUBLIC FIRE HYDRANTS SHALL BE INSTALLED, TESTED AND ACCEPTED PRIOR TO BEGINNING CONSTRUCTION. FIRE CODE 501.4
- FIRE DEPARTMENT VEHICULAR ACCESS ROADS MUST BE INSTALLED AND MAINTAINED IN A SERVICEABLE MANNER PRIOR TO AND DURING THE TIME OF CONSTRUCTION. FIRE CODE 501.4
- PROVIDE AN APPROVED AUTOMATIC FIRE SPRINKLER SYSTEM. PLANS SHALL BE SUBMITTED TO THE SPRINKLER PLAN CHECK UNIT FOR REVIEW AND APPROVAL PRIOR TO INSTALLATION. CFC, CHAPTER 9, SECTION 903 REASON: BUILDING AREA JUSTIFICATION
- THE FIRE SPRINKLER SYSTEM SHALL BE CALCULATED PER PAMPHLET #13.
- THE FIRE SPRINKLER SYSTEM SHALL BE SUPERVISED AS REQUIRED IN THE CBC, SECTION 903
- ON-SITE PROTECTION FACILITIES (I.E. HYDRANTS, SPRINKLER SYSTEMS, ETC.) SHALL BE SUBMITTED FOR APPROVAL PRIOR TO INSTALLATION. FIRE CODE 1001.4.
- THE INSPECTION, HYDROSTATIC TEST AND FLUSHING OF THE UNDERGROUND FIRE PROTECTION PIPING SHALL BE WITNESSED BY AN AUTHORIZED FIRE DEPARTMENT REPRESENTATIVE. NO UNDERGROUND PIPING OR THRUST BLOCKS SHALL BE COVERED WITH EARTH OR HIDDEN FROM VIEW UNTIL THE FIRE DEPARTMENT REPRESENTATIVE HAS BEEN NOTIFIED AND GIVEN NOT LESS THAN 48 HOURS IN WHICH TO INSPECT SUCH INSTALLATIONS. FIRE CODE 901.5, COUNTY OF LOS ANGELES FIRE DEPARTMENT REGULATION 7.
- THE MEANS OF EGRESS TRAVEL SHALL BE ILLUMINATED AT ANY TIME THE BUILDING IS OCCUPIED WITH A LIGHT INTENSITY OF NOT LESS THAN 1 FOOT-CANDLE AT THE FLOOR LEVEL. CFC, CHAPTER 10, SECTION 1006.2
- PROVIDE EXIT SIGNS PER CBC SECTION 1011
- PORTABLE FIRE EXTINGUISHER REQUIREMENTS SHALL BE DETERMINED BY FIRE DEPARTMENT FIELD INSPECTOR IN ACCORDANCE WITH CFC, CHAPTER 9, SECTION 906
- BUILDING ADDRESS NUMBERS SHALL BE PROVIDED AND MAINTAINED SO AS TO BE PLAINLY VISIBLE AND LEGIBLE FROM THE STREET FRONTING PROPERTY. THE NUMBERS SHALL CONTRAST WITH THEIR BACKGROUND, BE ARABIC NUMBERS OR ALPHABET LETTERS AND BE A MINIMUM 4 INCHES HIGH, WITH A MINIMUM STROKE WIDTH OF 0.5 INCH. FIRE CODE 505.1
- DUMPSTERS OR CONTAINERS WITH AN INDIVIDUAL CAPACITY OF 1.5 CUBIC YARDS (40.5 CU YD) OR MORE SHALL NOT BE STORED IN BUILDINGS OR PLACED WITHIN 5 FEET OF COMBUSTIBLE WALLS, OPENINGS OR COMBUSTIBLE ROOF EAVES, UNLESS AREAS CONTAINING DUMPSTERS OR CONTAINERS ARE PROTECTED BY AN AUTOMATICALLY ACTIVATED FIRE SPRINKLER SYSTEM. CFC, CHAPTER 3, SECTION 304.3.3
- EXIT DOORS SHALL BE CAPABLE OF OPENING WITHOUT THE USE OF A KEY OR ANY SPECIAL KNOWLEDGE OF EFFORT. CBC CHAPTER 10, SECTION 1008.1.8
- THE MINIMUM WIDTH OF EACH DOOR OPENING SHALL BE SUFFICIENT FOR THE OCCUPANT LOAD THEREOF AND SHALL PROVIDE A CLEAR WIDTH OF NOT LESS THAN 32 INCHES. THE HEIGHT OF DOORS SHALL NOT BE LESS THAN 80 INCHES. CBC 1008.1.1
- DOORS SHALL SWING IN THE DIRECTION OF TRAVEL WHERE SERVING AN OCCUPANT LOAD OF 50 OR MORE PERSONS OR A GROUP H OCCUPANCY. CBC 1008.1.2
- PROVIDE A KEY BOX IN ACCORDANCE WITH FIRE CODE 902.4. LOCATION: MAIN ENTRANCE. KEY BOX TO BE DESIGNED PER L.A. COUNTY FIRE DEPARTMENT REGULATION #5.
- WHERE MORE THAN ONE EXIT OR EXIT ACCESS DOORWAY IS REQUIRED, THE EXIT ACCESS SHALL BE ARRANGED SUCH THAT THERE ARE NO DEAD ENDS IN CORRIDORS MORE THAN 20 FEET IN LENGTH. CBC 1017.3
- THE WALLS AND SOFFITS WITHIN ENCLOSED USABLE SPACES UNDER ENCLOSED AND UNENCLOSED STAIRWAYS SHALL BE PROTECTED BY 1 HOUR FIRE RESISTANCE RATED CONSTRUCTION OR THE FIRE RESISTANCE RATING OF THE STAIRWAY ENCLOSURE, WHICHEVER IS GREATER. ACCESS TO THE ENCLOSED SPACE SHALL NOT BE DIRECTLY FROM WITHIN THE STAIR ENCLOSURE. CBC 1009.5.3
- PRIVATE ROADS USED FOR FIRE DEPARTMENT ACCESS SHALL BE CAPABLE OF SUPPORTING THE WEIGHT OF A 25-TON VEHICLE.
- OWNER TO OBTAIN PERMIT FORM FROM LOS ANGELES COUNTY FIRE DEPARTMENT IF ANY BUILDING OR PORTION OF THE BUILDING EXCEEDING 500 SQUARE FEET IS TO BE USED FOR STORAGE OF HIGH PILE COMBUSTIBLE STORAGE. UNIFORM FIRE CODE 1005.B.3.
- TURNING RADIUS FOR FIRE DEPARTMENT ROADS SHALL BE A MINIMUM OF 32' MEASURED FROM THE CENTERLINE OF THE ROAD.
- WALKING ACCESS USED TO CONNECT VEHICULAR ACCESS SHALL BE LEVEL, UNOBSTRUCTED BY LANDSCAPING, MINIMUM 5'-0" IN WIDTH, CLEAR TO THE SKY, ACCESSIBLE FOR FIREFIGHTING AND RESCUE PURPOSES.
- ALL ON-SITE FIRE HYDRANTS SHALL BE INSTALLED, TESTED, AND APPROVED PRIOR TO BUILDING OCCUPANCY. FIRE CODE 901.5.1
- PLANS SHOWING UNDERGROUND PIPING, FIRE DEPARTMENT CONNECTION, OR PRIVATE ON-SITE FIRE HYDRANTS SHALL BE SUBMITTED TO THE SPRINKLER PLAN CHECK UNIT FOR REVIEW AND APPROVAL PRIOR TO INSTALLATION. FIRE CODE 901.2, COUNTY OF LOS ANGELES REGULATION 7.
- THE POWER SUPPLY FOR MEANS OF EGRESS EXIT ILLUMINATION SHALL BE SUPPLIED FROM SEPARATE SOURCES IN ACCORDANCE WITH THE CBC, CHAPTER 10, SECTION 1006.3
- PROVIDE AN APPROVED AUTOMATIC FIRE SPRINKLER SYSTEM AS SET FORTH BY BUILDING CODE 903 AND FIRE CODE 903. PLANS SHALL BE SUBMITTED TO THE FIRE SPRINKLER PLAN CHECK UNIT FOR REVIEW AND APPROVAL PRIOR TO INSTALLATION.
- PROVIDE APPROVED SIGNS OR OTHER APPROVED NOTICES OR MARKINGS THAT INCLUDE THE WORDS "NO PARKING FIRE LANE". SIGNS SHALL BE PROVIDED FOR FIRE APPARATUS ACCESS ROADS TO CLEARLY INDICATE THE ENTRANCE TO SUCH ROAD, OR PROHIBIT THE OBSTRUCTION THEREOF, AS REQUIRED BY THE FIRE INSPECTOR.
- FIRE DEPARTMENT VEHICULAR ACCESS ROADS SHALL BE HARD SCAPE ALL WEATHER ACCESS IN ACCORDANCE WITH THE FIRE DEPARTMENT'S ALL WEATHER ACCESS REQUIREMENTS.
- FIRE APPARATUS ACCESS ROADS SHALL BE IDENTIFIED WITH APPROVED SIGNS, TEMPORARY SIGNS SHALL BE INSTALLED AT EACH STREET INTERSECTION WHEN CONSTRUCTION OF NEW ROADWAYS ALLOWS PASSAGE BY VEHICLES. SIGNS SHALL BE OF AN APPROVED SIZE, WEATHER RESISTANT AND BE MAINTAINED UNTIL REPLACED BY PERMANENT SIGNS. FIRE CODE 505.2
- PORTABLE FIRE EXTINGUISHERS SHALL BE INSTALLED IN LOCATIONS AS REQUIRED BY FIRE CODE 906
- FIRE PUMP ROOM SHALL BE FULLY SPRINKLERED IN ACCORDANCE TO NFPA 13. PLANS SHALL BE SUBMITTED TO THE SPRINKLER PLAN CHECK UNIT FOR REVIEW AND APPROVAL PRIOR TO INSTALLATION.

SITE PLAN

SCALE - 1" = 50'-0"



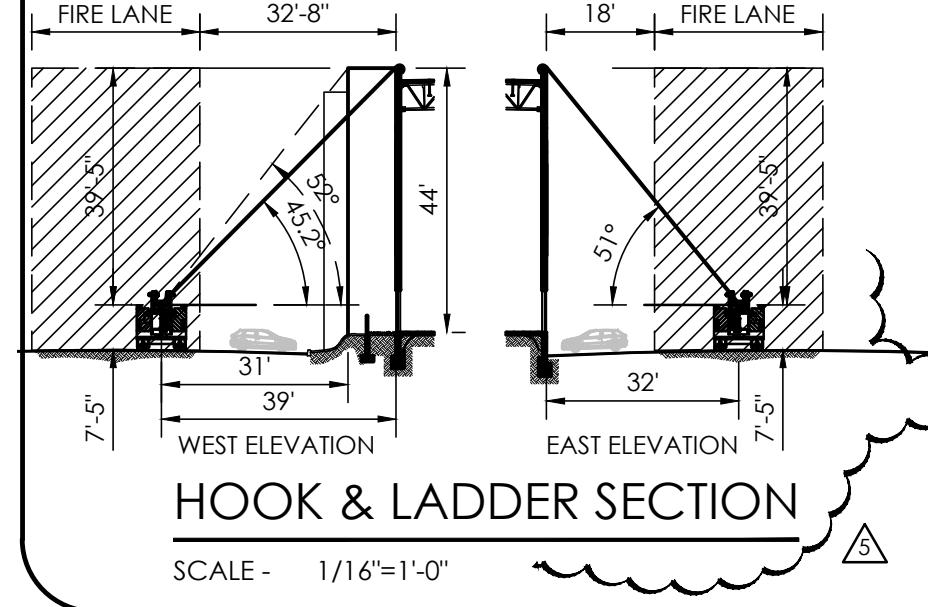
VICINITY MAP
NOT TO SCALE

SITE NOTES

- SITE LIGHTING SHALL BE SHIELDED AND WILL NOT IMPACT NEIGHBORING PROPERTIES.
- GROUND AND FLOOR SURFACES ALONG HANDICAP ACCESSIBLE ROUTES AND IN ACCESSIBLE ROOMS AND SPACES INCLUDING FLOORS, WALKS, RAMPS, AND CURB RAMPS SHALL BE FIRM AND SLIP RESISTANT.
- THE SOILS REPORT IS A PART OF THIS PROJECT AND SHALL BE READ CAREFULLY. CONCRETE AND GRADING CONTRACTORS ARE RESPONSIBLE FOR ALL CONDITIONS OF THE SOILS REPORT. GRADING CONTRACTOR SHALL TAKE ALL ELEVATIONS FROM THE SURVEY.
- PROPOSED BUILDING SEWER LINE SHALL TIED TO THE EXISTING USEABLE CITY SEWER REFER TO PLUMBING DRAWINGS PRIOR TO CONSTRUCTION.
- ELECTRICAL CONTRACTOR SHALL PROVIDE 110 VOLT, 20 AMPERES RECEPTACLES FOR IRRIGATION CONTROL PURPOSES
- PLUMBING CONTRACTOR SHALL PROVIDE WATER SUPPLY LINES, BACK FLOW PREVENTOR AND GATE VALVE FOR LANDSCAPE IRRIGATION SYSTEM.
- PLUMBING CONTRACTOR SHALL PROVIDE AND INSTALL AN APPROVED SEISMIC GAS SHUT-OFF VALVE PER CALIFORNIA GAS COMPANY SPECIFICATION GUIDELINES.
- WALKS AND SIDEWALKS SHALL HAVE A CONTINUOUS COMMON SURFACE, NOT INTERRUPTED BY STEPS OR BY ABRUPT CHANGES IN LEVEL EXCEEDING 1/2".
- WALKS AND SIDEWALKS SHALL BE 48" MINIMUM IN WIDTH.
- WALK AND SIDEWALK SURFACES SHALL BE SLIP-RESISTANT AS FOLLOWS: A SURFACES WITH A SLOPE OF LESS THAN 4% GRADIENT SHALL BE AT LEAST AS THAT DESCRIBED AS A MEDIUM TIED FINISH, A SLIP RESISTANT B SURFACES WITH A SLOPE OF 4% OR GREATER GRADIENT SHALL BE SLIP RESISTANT.
- CONTRACTOR SHALL VERIFY LOCATION AND SIZE OF ALL UTILITY PIPES.
- THIS OFFICE SHALL NOT BE RESPONSIBLE FOR DAMAGE TO ANY PUBLIC OR PRIVATE UTILITIES UTILITIES SHOWN OR NOT SHOWN ON THESE PLANS.
- THE LANDSCAPE DESIGNER RESPONSIBLE FOR ANY LANDSCAPING FOR THIS PROJECT SHOULD BE ADVISED TO UTILIZE PLANTING AND IRRIGATION TECHNIQUES THAT LEND THEMSELVES TO OPTIMUM CONSERVATION OF WATER RESOURCES.
- PLUMBING FIXTURES SHALL BE PROVIDED IN ACCORDANCE WITH TABLE 4-1 SEE A-2.0 FOR FIXTURE CALCULATIONS

EXIT NOTES

- EXIT SIGN SHALL BE READILY VISIBLE FROM ANY DIRECTION OF APPROACH. EXIT SIGNS SHALL BE LOCATED AS NECESSARY TO CLEARLY INDICATE THE DIRECTION OF EGRESS TRAVEL. NO POINT SHALL BE MORE THAN 100 FEET FROM THE NEAREST VISIBLE SIGN.
- ALL EXIT SIGNS SHALL BE ILLUMINATED AT ALL TIMES. THE POWER SUPPLY FOR MEANS OF EGRESS ILLUMINATION SHALL NORMALLY BE PROVIDED BY THE PREMISES ELECTRICAL SUPPLY. IN THE EVENT OF POWER SUPPLY FAILURE, THE EMERGENCY POWER SYSTEM SHALL PROVIDE POWER FOR A DURATION OF NOT LESS THAN 90 MINUTES AND SHALL CONSIST OF STORAGE BATTERIES, UNIT EQUIPMENT OR AN ON-SITE GENERATOR. BUILDING CODE 1006.3
- EXIT SIGNS SHALL BE INTERNALLY OR EXTERNALLY ILLUMINATED. WHEN THE FACE OF AN EXIT SIGN IS ILLUMINATED FROM AN EXTERNAL SOURCE, IT SHALL HAVE AN INTENSITY OF NOT LESS THAN 5 FOOT-CANDLES FROM EITHER OF TWO ELECTRICAL LAMPS. INTERNALLY ILLUMINATED SIGNS SHALL PROVIDE EQUIVALENT LUMINANCE, AND BE LISTED FOR THAT PURPOSE.
- THE COLOR AND DESIGN OF LETTERING, ARROWS AND OTHER SYMBOLS ON EXIT SIGNS SHALL BE IN CONTRAST WITH THEIR BACKGROUND. EXIT SIGNS SHALL HAVE ON THE SIGN IN BLOCK CAPITAL LETTERS NOT LESS THAN 6 INCHES IN HEIGHT. THE LETTERS SHALL BE ILLUMINATED AT ANY TIME THE BUILDING IS OCCUPIED WITH A LIGHT INTENSITY OF NOT LESS THAN 1 FOOT-CANDLE AT THE FLOOR LEVEL. STROKE AND SPACING IN PROPORTION TO THEIR HEIGHT.
- ANY TIME A BUILDING OR PORTION OF IT IS OCCUPIED, THE MEANS OF EGRESS SERVING THE OCCUPIED PORTION OF THE BUILDING SHALL BE ILLUMINATED AT AN INTENSITY OF NOT LESS THAN 1 FOOT-CANDLE (1 lumen) AT THE FLOOR LEVEL. CBC 1006.2



HOOK & LADDER SECTION

SCALE - 1/16" = 1'-0"

OWNER: KTR CAPITAL PARTNERS

GENERAL CONTRACTOR: C.E.G. CONSTRUCTION

DESIGN: O.C. DESIGN & ENGINEERING

PROJECT ADDRESS: 6100 GARFIELD AVE COMMERCE, CA

TITLE SHEET: SITE PLAN

DATE: 1-30-12

SCALE: INDICATED

DRAWN: I.C.

JOB: A-10-025

SHEET: A-1.0

OF SHEETS

REVISED BY DATE

IN HOUSE REVISION 2/8/2012 P.C.

IN HOUSE REVISION 5/1/2013 W.M.

IN HOUSE REVISION 5/20/2013 I.C.

IN HOUSE REVISION 6/20/2013 W.M.

IN HOUSE REVISION 12/20/2013 I.C.

REVISED BY DATE

IN HOUSE REVISION 10/26/2012 P.C.

IN HOUSE REVISION 10/26/2012 I.C.

IN HOUSE REVISION 10/26/2012 I.C.

IN HOUSE REVISION 10/26/2012 I.C.

IN HOUSE REVISION 10/26/2012 I.C.

REVISIONS PER OWNER'S REQUEST

FREE DEPARTMENT CORRECTIONS

A.C.A. BLDG. AND SAFETY CORRECTIONS

SPACE AND PADDING REGION

FREE DEPARTMENT CORRECTIONS

10/26/2012

10/26/2012

10/26/2012

10/26/2012

10/26/2012

REGISTERED PROFESSIONAL ENGINEER

No. 43326

Exp. 03-31-16

STATE OF CALIFORNIA

ENGINEER

PROJECT NO. 10-025

10/26/2012

10/26/2012

10/26/2012

10/26/2012

10/26/2012

FIVE COVER BRIDGE, 300-HARBOR DRIVE ST. 150

CONSTRUCTION AREA TEL (213) 784-4400